

## THE CONTENTS OF PACKAGE

### LED DOWNLIGHT 4" , 6" and 8"

1. LED driver
2. Cable between LED driver and downlight
3. LED Downlight

#### PRODUCT EXPLODED VIEW

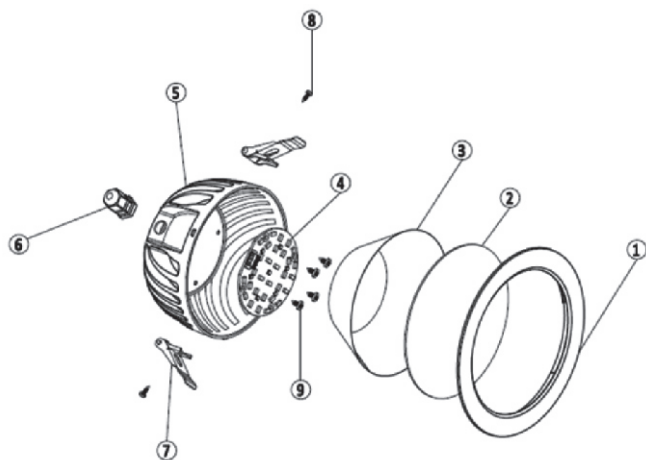


Figure.1

- |                             |                           |
|-----------------------------|---------------------------|
| 1. Front frame              | 6. Cable gland            |
| 2. Diffuser                 | 7. Ceiling fixing bracket |
| 3. Reflector                | 8. 2.2x5 Screw            |
| 4. PCB                      | 9. 2.2x9.5 Screw          |
| 5. Aluminium heat sink body |                           |

#### SAFETY PRECAUTIONS

The product must be properly installed in the ceiling, otherwise the product may drop and cause injury to the user.

Do not use if the product has been dropped or exposed to shock. There is a risk of product malfunction and/or electric shock.

If the luminaire turns off by itself or functions improperly, do not disassemble the product yourself. Please contact to the service center for repairs.

Do not stare directly at the lamp when turned on. Strong light may cause visual impairment.

Do not cover the device with clothes or paper, or place it near inflammables. There is a risk of fire or malfunction of the device.

Keep distance between the lamp and the object to be illuminated. If the illumination distance is too close or if the illumination is on a material's surface, this may cause discoloration and/or deformation of the object or cause fire.

Do not use the device for purposes other than illumination. (including warming food, drying clothes, using under water, using as a search light, fishing or other events. ) There is a risk of fire or malfunction of device.

Do not cover the product with thermally insulating material.



If the armature which is 100% dimmed, it may not work properly after suddenly turn on.

If AC input current has a ripple, dim function may not work properly at low voltage.

Product complies with the WEEE Directives.



#### WARNINGS

Do not wipe the surface with inflammables, such as alcohol, benzene, and acetone.

Do not use the device in places with corrosive gases.

Make sure to cut off the main power during installation.

If the LED driver is broken, it must be replaced with the identical model.

The connection to the electrical network should be done by authorized personnel. LED driver must be connected to the power network with proper components such as connectors and terminals in junction with the local regulations. Authorized personnel is responsible for using protectors such as circuit breaker and fuse box, in order to provide isolation between conductors and taking precautions to avoid any electrical shock that could be happen. If the exterior electrical cable or cord of product was damaged, it must be changed with new one, this operation must be only done by authorized service or manufacturer.

Products surface may be hot during operation. Don't touch the surface before turn off the device.

For the supply connection to the input terminals of the control gear: Required flexible cable, types H03VV-F or H05VV-F with cross sectional area 0,75 mm<sup>2</sup>- 1 mm<sup>2</sup>.

Be sure that all the connections are fixed.

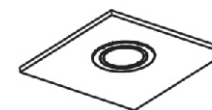
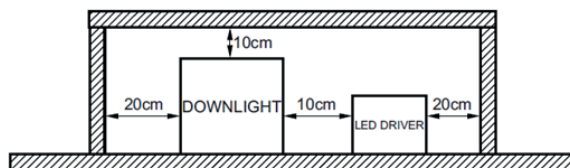
LED driver of this product has thermal protection with automatic reset function.

Thermal protection of the LED driver is up to 110 Celcius degree. This complies with code C5 of IEC/EN 61347-1.

#### INSTALLATION INSTRUCTIONS

##### CEILING MOUNTING INSTRUCTIONS

Products must be installed according to below specified distance.



FRONT VIEW



BACK VIEW

Figure .2

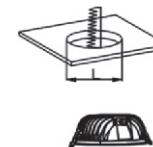


Figure.3

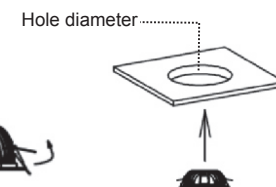


Figure.5



Figure.4



Figure.6

1.The product is located to the hole where will be installed. Figure.3

2.Ceiling fixing bracket is fixed in the direction of arrow until it touch cooler aluminium body. Figure.4

3.The product is pressed to the hole in the direction of arrow. Figure.5

4.The last view after installment should be like Figure 6. Flush mounted and wall mounted's scenes a Figure2.

#### CABLE CONNECTION INSTRUCTIONS

Products are designed for Class 2 usage.

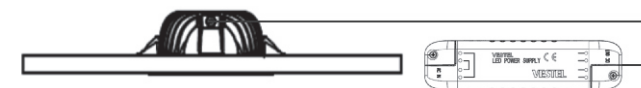
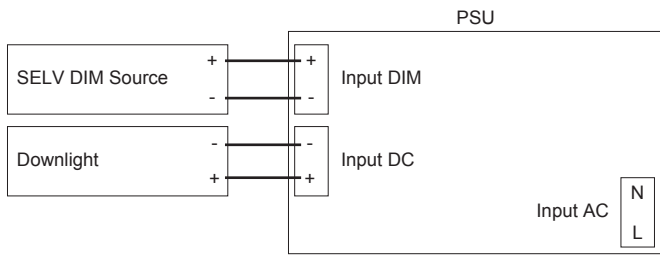


Figure .7

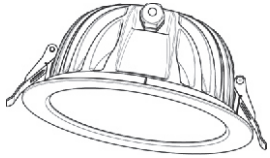
Line cable from mains should be connected to the L pin where AC side of VESTEL PSU. Neutral cable from mains should be connected to the N pin where AC side of VESTEL PSU. In figure.8, cable should be connected between VESTEL PSU and downlight. Brown cable should be connected between DC OUT + terminal of PSU and downlight + terminal. Blue cable should be connected between DC OUT - terminal of PSU and downlight - terminal.



Figure .8



VESTEL PSU has DIM option. DIM voltage must be provided from SELV source. + terminal of DIM source should be connected to + terminal of DIM INPUT 0-10V of PSU and - terminal of DIM source should be connected to - terminal of DIM INPUT 0-10V of PSU. DIM option is valid for 4", 6" and 8" downlight



| PRODUCT DESCRIPTION | HOLE DIAMATER(L) (Figure.5) |
|---------------------|-----------------------------|
| 4 INCH LC DL        | 100 mm                      |
| 6 INCH LC DL        | 155 mm                      |
| 8 INCH LC DL        | 205 mm                      |

Figure .9

Final product is shown in figure 9. This figure is reference for 4", 6" and 8" downlight. The radius of 4" downlight is 116mm The radius of 6" downlight is 172 mm and the radius of 8" downlight is 222 mm.

